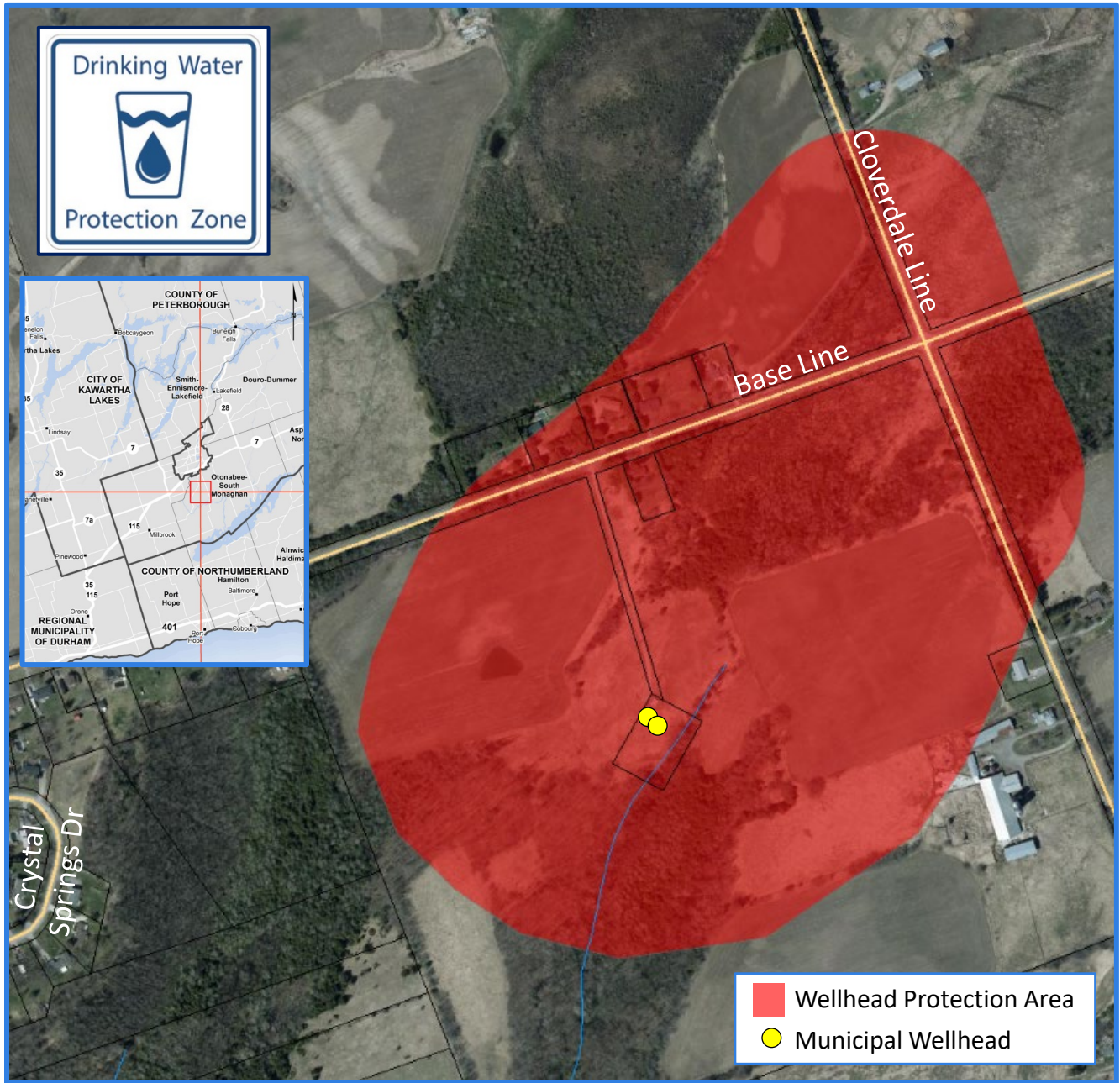


The *Clean Water Act* was developed to protect municipal, residential drinking water sources across the province from contamination and/or overuse by ensuring policies are in place to manage activities that may pose a drinking water. **Locally, these policies are included in the Trent Source Protection Plan and they apply within the red shaded area shown below.**



The **Crystal Springs Municipal Well System** is one of 53 municipal, residential drinking water systems in the Trent Conservation Coalition Source Protection Region that is protected under the *Clean Water Act* and is 1 of 12 systems in the Otonabee-Peterborough Source Protection Area.

Water Source	Groundwater
Owned by	Township of Otonabee-South Monaghan
Operated by	Ontario Clean Water Agency
Serviced Population	265 (approximately)
Annual Pump Rate	114 m ³ /day (average)
Well Depths	Well 1: 19.8 m (main production well) Well 2: 26.5 m (standby well)
Aquifer Type	Confined overburden
Treatment System	Disinfection with sodium hypochlorite and UV irradiation

Data source: Trent Assessment Report

Activities that can pose a Threat to the municipal drinking water source



- ✓ Waste disposal and sewage systems
- ✓ Livestock grazing, pasturing, confinement
- ✓ Road salt use and snow storage
- ✓ Spreading or storing of agricultural materials (e.g. manure)
- ✓ Pesticide and fertilizer storage and use
- ✓ Liquid fuel storage (e.g. home heating oil)
- ✓ Chemical handling and storage

Contact us to find out how you can protect drinking water



Terri Cox
Risk Management Official and Inspector
t: 705-745-5791 x 219
f: 705-745-7488
tcox@otonabeeconservation.com



www.otonabeeconservation.com

With support provided by **Ontario**

Otonabee Region Conservation Authority
250 Milroy Drive, Peterborough ON K9H 7M9