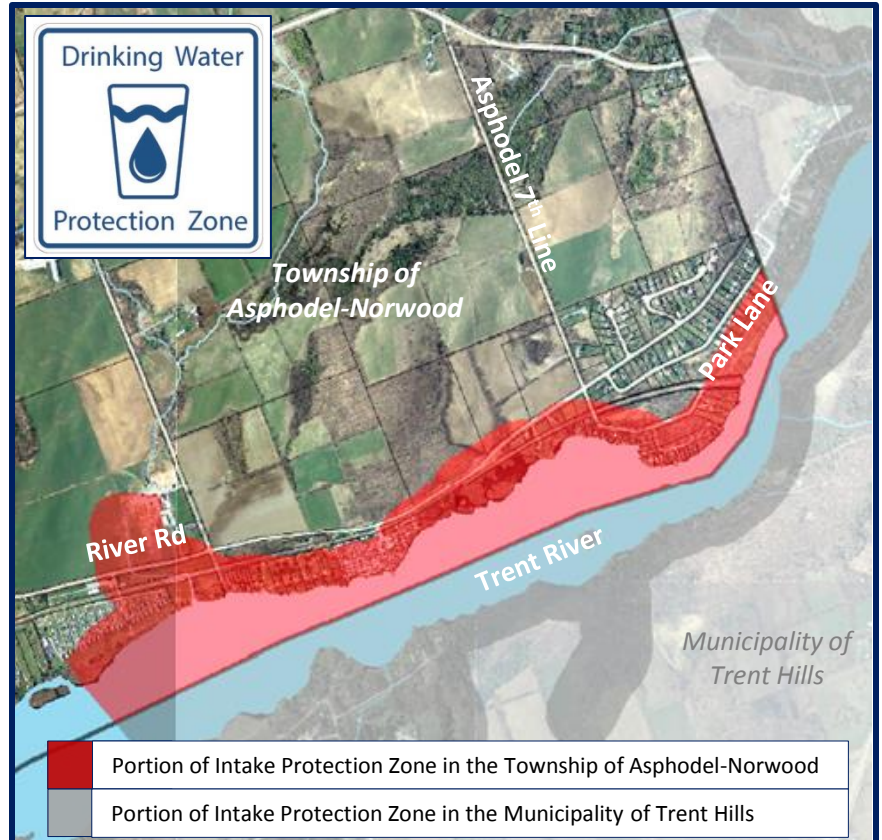


The Hastings Municipal Surface Water System is 1 of 53 municipal residential drinking water systems in the Trent Conservation Coalition Source Protection Region, and is 1 of 12 systems that includes land in the Otonabee-Peterborough Source Protection Area.

The Trent Source Protection Plan came into effect January 1, 2015 and was developed under the *Clean Water Act*. It was approved by the Ministry of the Environment and Climate Change (MOECC) and contains policies that direct local efforts to better protect the sources of water that supply municipal residential drinking water systems.

The MOECC lists 21 drinking water threats (land-based activities that can impact source water quality or quantity). The location, scale and nature of an activity determine if the threat is low, moderate, or *significant*. Trent Source Protection Plan policies apply to *significant* drinking water threat activities in the Hastings Intake Protection Zone shown at right and on map on the reverse.



Water Source	Trent River
Owned By	Municipality of Trent Hills
Operating Authority	Municipality of Trent Hills
Serviced Population	1,250 (approximately)
Annual Pump Rate	752 m ³ /day (average)
Intake Depth	1.5 m (approximately)
Intake Classification	Type D (affected by a water impoundment structure)
Treatment System	Full conventional treatment process (coagulation, flocculation, sedimentation, filtration, and disinfection)

Data Source: Approved Trent Assessment Report dated October 1, 2014

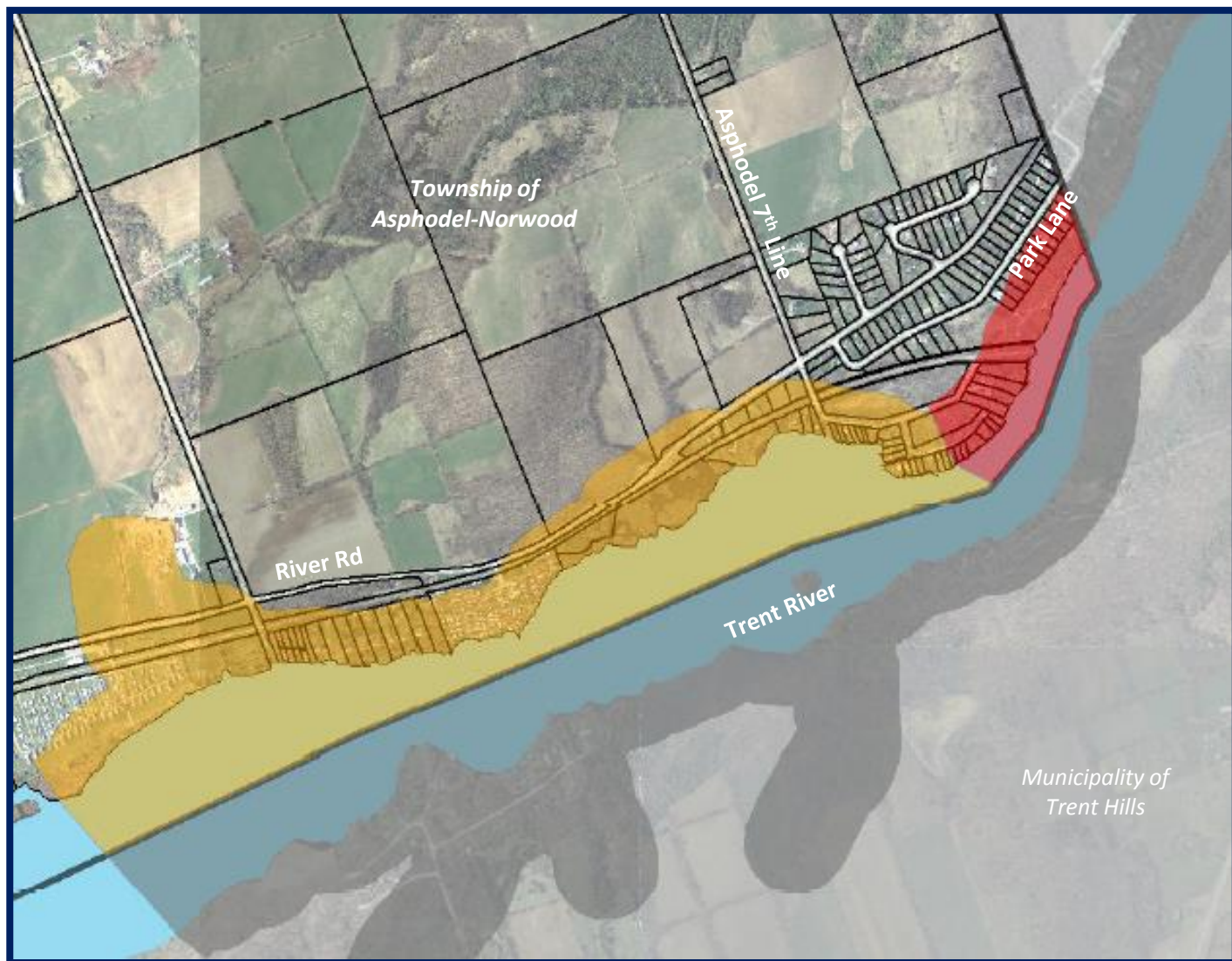


Intake Protection Zone

Hastings Portion of the Municipal Surface Water System
in the Township of Asphodel-Norwood

Trent Source Protection Plan policies apply to *significant* drinking water threat activities in the Intake Protection Zone shown below and as illustrated on the Policy Applicability Map included in the appendix of the Trent Source Protection Plan.

- Primary protection area around the municipal intake pipe
- Contaminants may reach the municipal intake pipe within 2 hours of a spill or leak in this area
- Portion of Intake Protection Zone in the Municipality of Trent Hills



Meredith Carter
Manager, Watershed Management Program
705-745-5791 x 223
mcarter@otonabeeconservation.com

Terri Cox
Risk Management Official and Inspector
705-745-5791 x 219
tcox@otonabeeconservation.com

The Trent Source Protection Plan is available at www.trentsourceprotection.on.ca

With support
provided by



Otonabee Region Conservation Authority
250 Milroy Drive, Peterborough ON K9H 7M9
www.otonabeeconservation.com • t: 705-745-5791 • f: 705-745-7488

