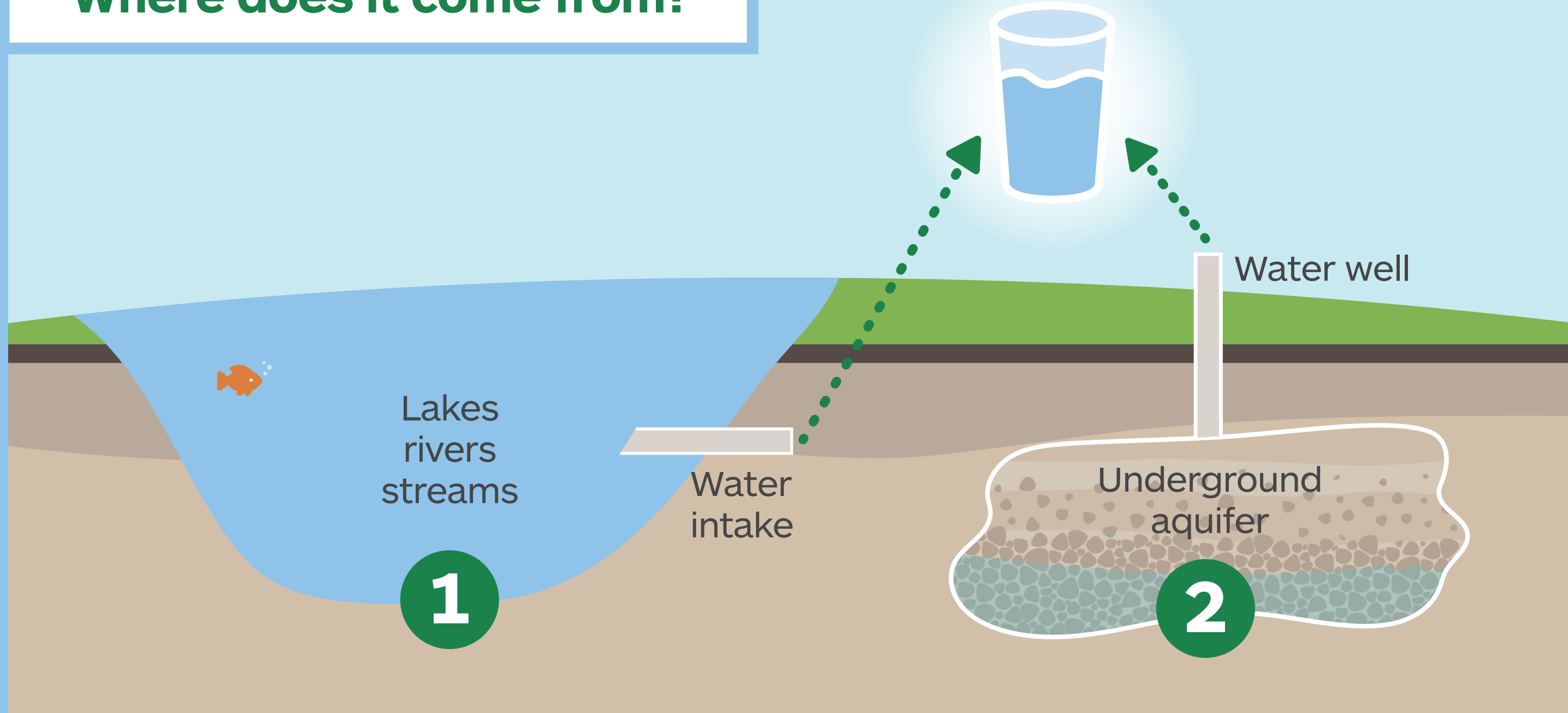


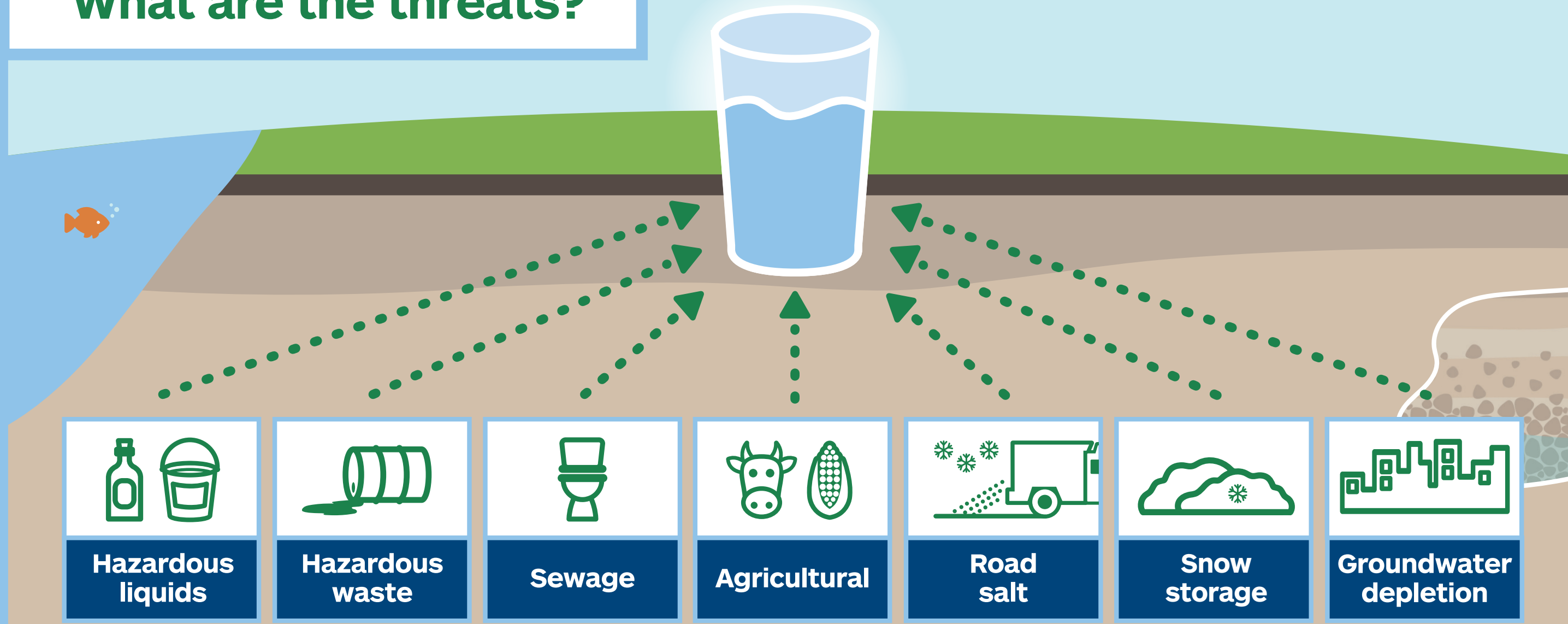
YOUR Water

August 2018


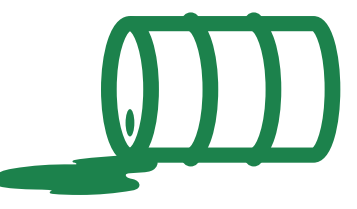



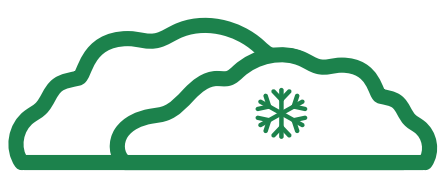
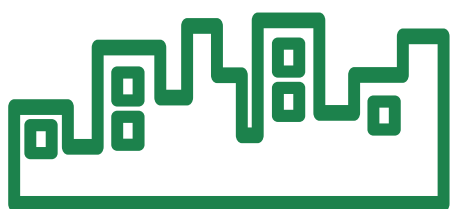
Where does it come from?



What are the threats?



Threats: a breakdown

 Hazardous liquids	Improperly used or stored hazardous liquids.
 Hazardous waste	Improperly stored or disposed of hazardous waste.
 Sewage	Improperly maintained septic systems.
 Agricultural	Improperly used or stored nutrients, fertilizers, pesticides or animal waste.
 Road salt	Excessive use of winter salt.
 Snow storage	Runoff from large piles of snow (such as in parking lots).
 Groundwater depletion	Activities that prevent rain or snow from entering the ground and replenishing underground water sources.

Threat + Vulnerable Area =

potential risk

Vulnerable Areas are located near municipal water wells or surface water intakes that bring water from lakes and rivers into treatment plants.

When a home or business is located in a Vulnerable Area, the activities on that property play an even greater role in ensuring the protection of municipal drinking water supplies. That's because contaminants can have a greater, more immediate impact on municipal drinking water.

To find out if a property is in a Vulnerable Area, visit www.trentsourceprotection.on.ca

DRINKING WATER SOURCE PROTECTION
Act for Clean Water
Otonabee-Peterborough Source Protection Area



Otonabee Conservation
705-745-5791
otonabeeca@otonabeeconservation.com
www.otonabeeconservation.com

Water is life.
Protect Yours.