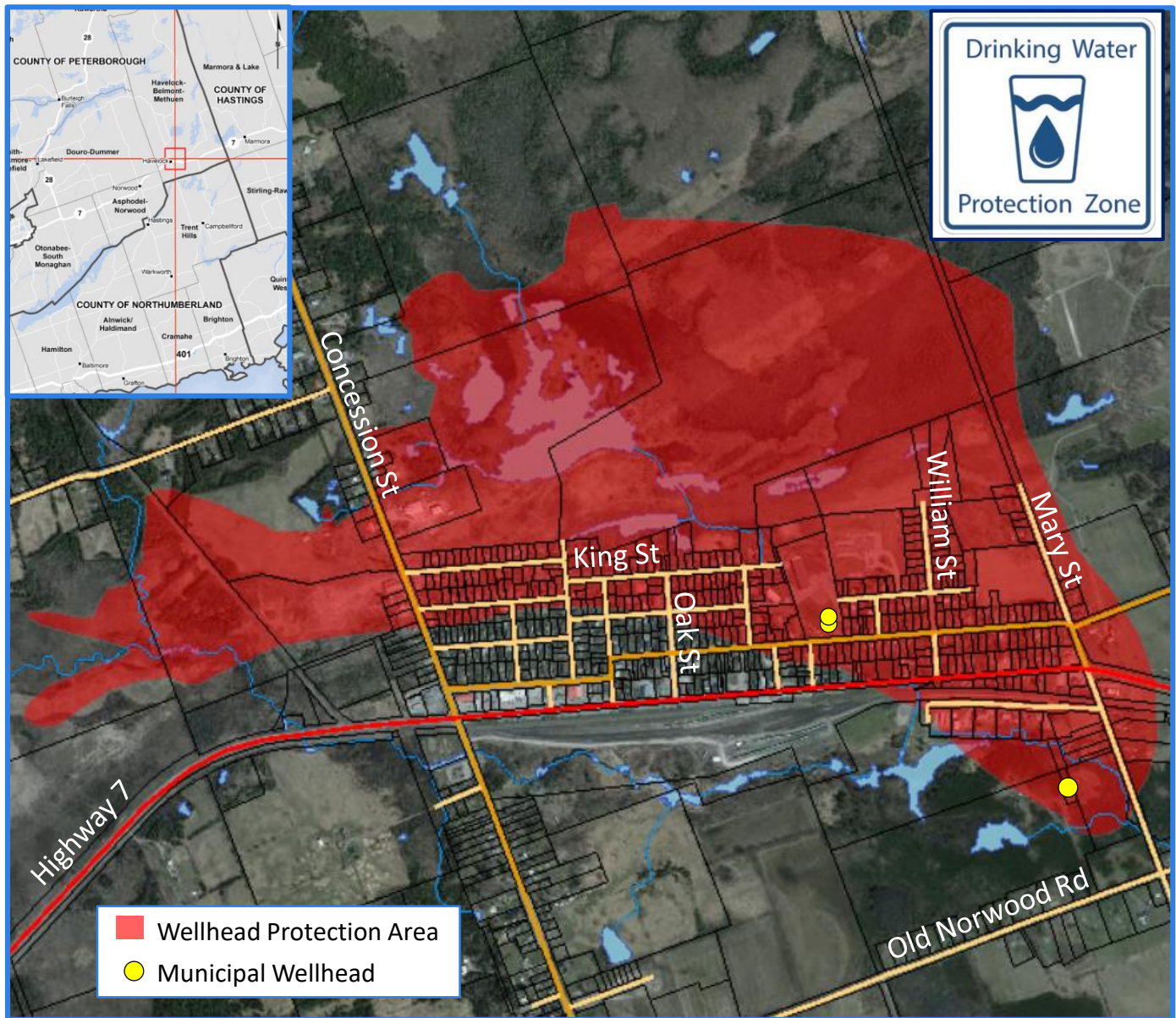


The **Clean Water Act** was developed to protect municipal, residential drinking water sources across the province from contamination and/or overuse by ensuring policies are in place to manage activities that may pose a drinking water threat. **Locally, these policies are included in the Trent Source Protection Plan and they apply in the red shaded area shown below.**



The **Havelock Municipal Well System** is one of 53 municipal, residential drinking water systems in the Trent Conservation Coalition Source Protection Region that is protected under the *Clean Water Act* and is 1 of 4 systems in the Crowe Valley Source Protection Area.

Water Source	Groundwater
Owned	Havelock-Belmont-Methuen Township
Operated By	Ontario Clean Water Agency
Serviced Population	1,400 (approximately)
Annual Pump Rate	169 cubic meters (average)
Well Depths	Well 1: 15.2 meters Well 2: 13.7 meters Well 3: 15 meters
Aquifer Type	Unconfined bedrock aquifers : groundwater under the direct influence of surface water
Treatment System	Disinfection with sodium hypochlorite; chlorine and UV irradiation; dual media filtration

Data source: Trent Assessment Report

Activities that can pose a Threat to the municipal drinking water source



- ✓ Waste disposal and sewage systems
- ✓ Livestock grazing, pasturing, confinement
- ✓ Road salt use and snow storage
- ✓ Spreading or storing of agricultural materials (e.g. manure)
- ✓ Pesticide and fertilizer storage and use
- ✓ Liquid fuel storage (e.g. home heating oil)
- ✓ Chemical handling and storage

Contact us to find out how you can protect drinking water



Andrew McIntyre
 Source Water Protection Technician
 Crowe Valley Source Protection Authority
 (613) 472-3137
andrew.mcintyre@crowevalley.com

www.crowevalley.com

With support provided by **Ontario** 

Crowe Valley Conservation Authority
 70 Hughes Lane, ON K0K 2M0